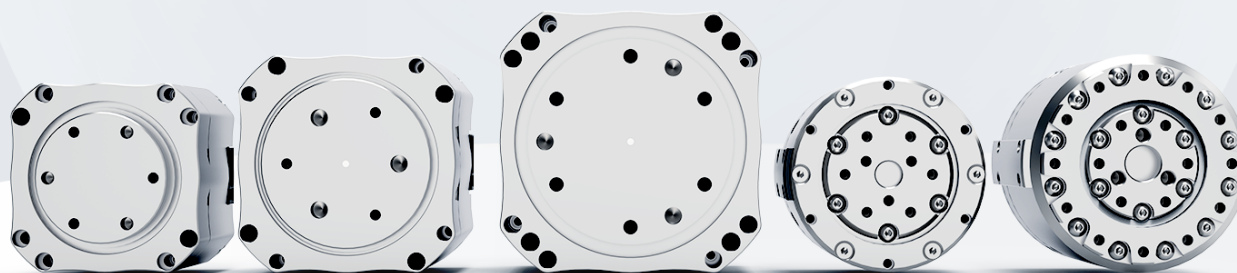


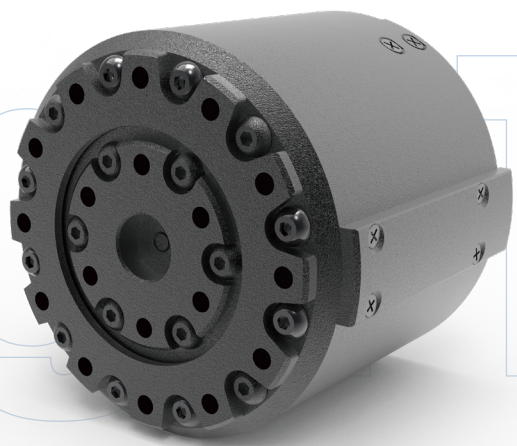
PLANETARY SERIES BROCHURE

行星系列 产品手册

高擎机电伺服关节模组



High Torque HTDW-5046-20-NE 行星关节模组



产品参数 Product Parameters

基本参数	Basic parameters
长宽 length and width (mm)	50
高度 high degree (mm)	47
重量 weights (g)	280

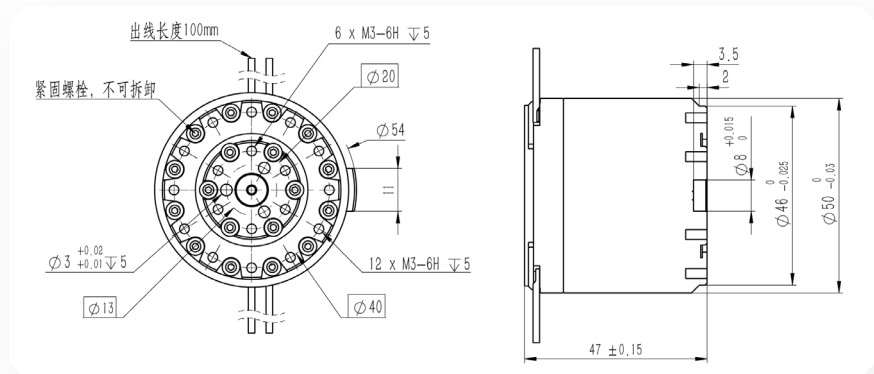
减速机特性参数	Reducer Characteristics
齿隙 Backlash(Arcmin)	<10
重复定位精度 Repeat Positioning Accuracy(Arcmin)	<12
绝对定位精度 Absolute positioning accuracy(Arcmin)	<15

模组性能参数	Module performance parameters
额定电压 Rated voltage(V)	12-48
峰值电流 Peak current(A)	10
转速控制精度 Speed control accuracy(Nm/A)	±5%
高速端编码器分辨率 High-speed encoder resolution(bit)	14
通讯波特率 Baud rate(Mbps)	5
额定电流 Rated current(A)	2
扭矩控制精度 control accuracy(Nm/A)	±12%
响应时间 Response time(us)	≤200
低速端编码器分辨率 Low-speed encoder resolution(bit)	12
控制频率 Control frequency(Hz)	3k

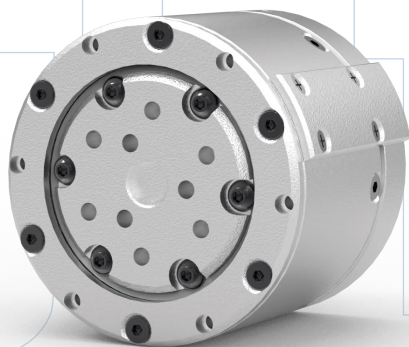
电机特性参数	Motor parameters
扭矩常数 Torque constant(Nm/A)	0.062
极对数 Polar logarithm(mm)	50

模组性能参数(24v)	Module performance parameters
减速比 Reduction ratio	20
峰值扭矩 Peak torque(Nm)	8
额定转速 Rated RPM(RPM)	80
额定功率 Rating(W)	17
额定扭矩 Rated torque(Nm)	2
堵转扭矩 Blocking torque(Nm)	11
空载转速 Polar logarithm(mm)	120

产品安装尺寸图纸 Product Installation Dimension Drawing



High Torque HTDW-4538-20-NE 行星关节模组



产品参数 Product Parameters

基本参数 Basic parameters

长宽 length and width (mm)	45
高度 high degree (mm)	38
重量 weights (g)	175

减速机特性参数 Reducer Characteristics

齿隙 Backlash(Arcmin)	<12
重复定位精度 Repeat Positioning Accuracy(Arcmin)	<15
绝对定位精度 Absolute positioning accuracy(Arcmin)	<18

模组性能参数

Module performance parameters

额定电压 Rated voltage(V)	12-48	额定电流 Rated current(A)	1
峰值电流 Peak current(A)	5	扭矩控制精度 control accuracy(Nm/A)	±18%
转速控制精度 Speed control accuracy(Nm/A)	±15%	响应时间 Response time(us)	≤200
高速端编码器分辨率 High-speed encoder resolution(bit)	14	低速端编码器分辨率 Low-speed encoder resolution(bit)	12
通讯波特率 Baud rate(Mbps)	5	控制频率 Control frequency(Hz)	3k

电机特性参数

Motor parameters

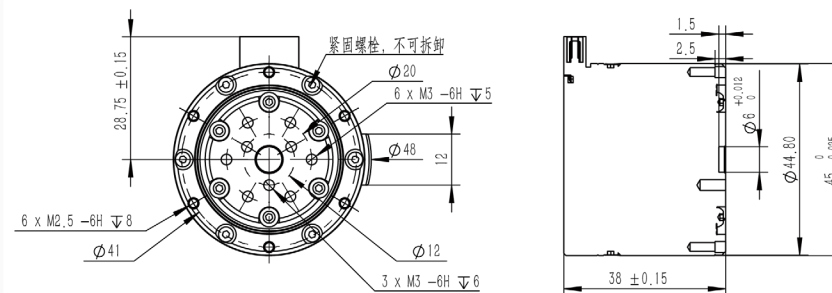
扭矩常数 Torque constant(Nm/A)	0.039	极对数 Polar logarithm(mm)	14
-------------------------------	-------	----------------------------	----

模组性能参数(24v)

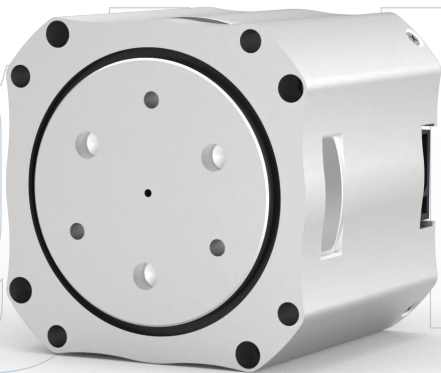
Module performance parameters

减速比 Reduction ratio	20	额定扭矩 Rated torque(Nm)	1
峰值扭矩 Peak torque(Nm)	3	堵转扭矩 Blocking torque(Nm)	5
额定转速 Rated RPM(RPM)	100	空载转速 Polar logarithm(mm)	120
额定功率 Rating(W)	10		

产品安装尺寸图纸 Product Installation Dimension Drawing



High TORQUE HTDW-5047-36-NE 行星关节模组



产品参数 Product Parameters

基本参数 Basic parameters

长宽 length and width (mm)	50
高度 high degree (mm)	46.5
重量 weights (g)	305

减速机特性参数 Reducer Characteristics

齿隙 Backlash(Arcmin)	<10
重复定位精度 Repeat Positioning Accuracy(Arcmin)	<12
绝对定位精度 Absolute positioning accuracy(Arcmin)	<15

模组性能性能参数

Module performance performance parameters

额定电压 Rated voltage(V)	12-48	额定电流 Rated current(A)	2
峰值电流 Peak current(A)	10	扭矩控制精度 control accuracy(Nm/A)	±10%
转速控制精度 Speed control accuracy(Nm/A)	±8%	响应时间 Response time(us)	≤200
高速端编码器分辨率 High-speed encoder resolution(bit)	14	低速端编码器分辨率 Low-speed encoder resolution(bit)	12
通讯波特率 Baud rate(Mbps)	5	控制频率 Control frequency(Hz)	3k

电机特性参数

Motor parameters

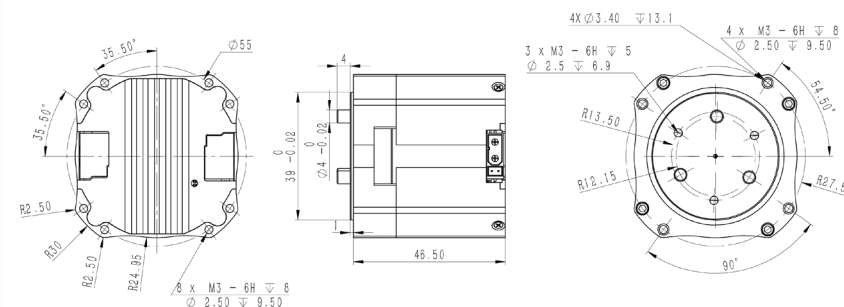
扭矩常数 Torque constant(Nm/A)	0.062	极对数 Polar logarithm(mm)	14
-------------------------------	-------	----------------------------	----

模组性能性能参数(24v)

Module performance performance parameters

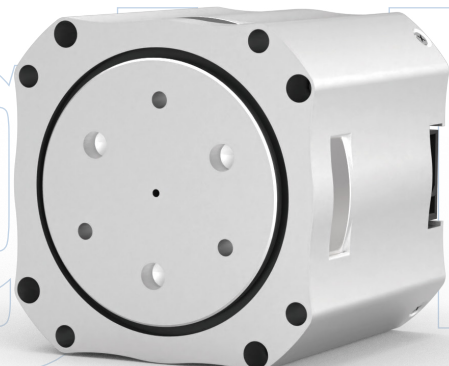
减速比 Reduction ratio	36	额定扭矩 Rated torque(Nm)	4
峰值扭矩 Peak torque(Nm)	16	堵转扭矩 Blocking torque(Nm)	24
额定转速 Rated RPM(RPM)	40	空载转速 Polar logarithm(mm)	60
额定功率 Rating(W)	17		

产品安装尺寸图纸 Product Installation Dimension Drawing



HTDW-5047-9-NE

行星关节模组



产品参数 Product Parameters

基本参数 Basic parameters

长宽 length and width (mm)	50
高度 high degree (mm)	46.5
重量 weights (g)	300

减速机特性参数 Reducer Characteristics

齿隙 Backlash(Arcmin)	<10
重复定位精度 Repeat Positioning Accuracy(Arcmin)	<12
绝对定位精度 Absolute positioning accuracy(Arcmin)	<15

模组性能性能参数

Module performance performance parameters

额定电压 Rated voltage(V)	12-48	额定电流 Rated current(A)	2
峰值电流 Peak current(A)	10	扭矩控制精度 control accuracy(Nm/A)	±10%
转速控制精度 Speed control accuracy(Nm/A)	±8%	响应时间 Response time(us)	≤200
高速端编码器分辨率 High-speed encoder resolution(bit)	14	低速端编码器分辨率 Low-speed encoder resolution(bit)	12
通讯波特率 Baud rate(Mbps)	5	控制频率 Control frequency(Hz)	3k

电机特性参数

Motor parameters

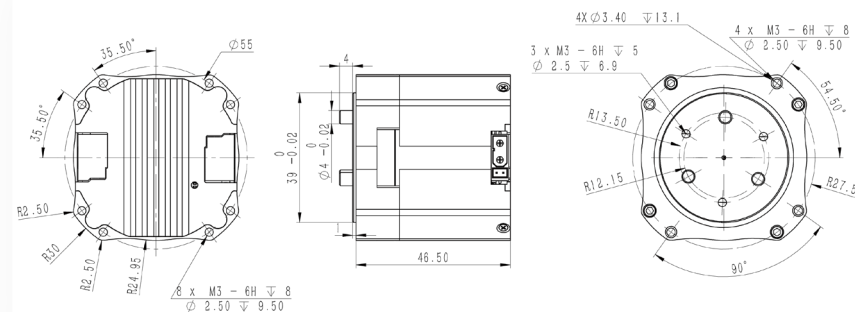
扭矩常数 Torque constant(Nm/A)	0.062	极对数 Polar logarithm(mm)	14
-------------------------------	-------	----------------------------	----

模组性能性能参数(24v)

Module performance performance parameters

减速比 Reduction ratio	9	额定扭矩 Rated torque(Nm)	1
峰值扭矩 Peak torque(Nm)	4	堵转扭矩 Blocking torque(Nm)	6
额定转速 Rated RPM(RPM)	170	空载转速 Polar logarithm(mm)	260
额定功率 Rating(W)	18		

产品安装尺寸图纸 Product Installation Dimension Drawing



High TORQUE HTDW-4438-30-NE 行星关节模组



产品参数 Product Parameters

基本参数 Basic parameters	
长宽 length and width (mm)	44
高度 high degree (mm)	39.9
重量 weights (g)	194

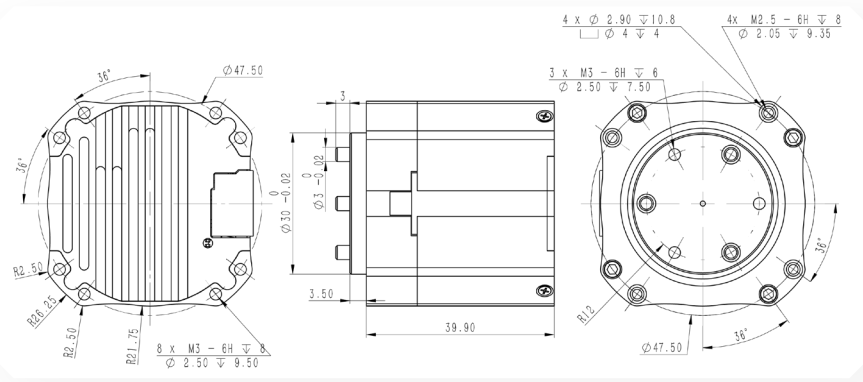
减速机特性参数 Reducer Characteristics	
齿隙 Backlash(Arcmin)	<10
重复定位精度 Repeat Positioning Accuracy(Arcmin)	<12
绝对定位精度 Absolute positioning accuracy(Arcmin)	<15

模组性能性能参数 Module performance performance parameters			
额定电压 Rated voltage(V)	12-48	额定电流 Rated current(A)	1
峰值电流 Peak current(A)	5	扭矩控制精度 control accuracy(Nm/A)	±20%
转速控制精度 Speed control accuracy(Nm/A)	±10%	响应时间 Response time(us)	≤200
高速端编码器分辨率 High-speed encoder resolution(bit)	14	低速端编码器分辨率 Low-speed encoder resolution(bit)	12
通讯波特率 Baud rate(Mbps)	5	控制频率 Control frequency(Hz)	3k

电机特性参数 Motor parameters			
扭矩常数 Torque constant(Nm/A)	0.039	极对数 Polar logarithm(mm)	14

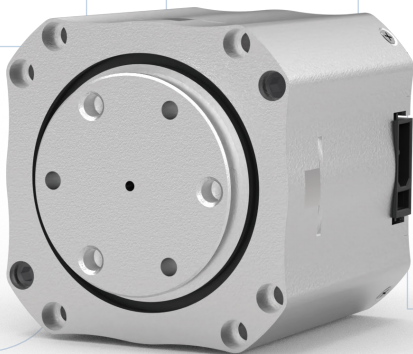
模组性能性能参数(24v) Module performance performance parameters			
减速比 Reduction ratio	30	额定扭矩 Rated torque(Nm)	1.5
峰值扭矩 Peak torque(Nm)	6	堵转扭矩 Blocking torque(Nm)	10
额定转速 Rated RPM(RPM)	36	空载转速 Polar logarithm(mm)	75
额定功率 Rating(W)	13		

产品安装尺寸图纸 Product Installation Dimension Drawing



HTDW-4438-8-NE

行星关节模组



产品参数 Product Parameters

基本参数 Basic parameters

长宽 length and width (mm)	44
高度 high degree (mm)	39.9
重量 weights (g)	191

减速机特性参数 Reducer Characteristics

齿隙 Backlash(Arcmin)	<8
重复定位精度 Repeat Positioning Accuracy(Arcmin)	<10
绝对定位精度 Absolute positioning accuracy(Arcmin)	<12

模组性能参数

Module performance parameters

额定电压 Rated voltage(V)	12-48	额定电流 Rated current(A)	1
峰值电流 Peak current(A)	5	扭矩控制精度 control accuracy(Nm/A)	±15%
转速控制精度 Speed control accuracy(Nm/A)	±10%	响应时间 Response time(us)	≤200
高速端编码器分辨率 High-speed encoder resolution(bit)	14	低速端编码器分辨率 Low-speed encoder resolution(bit)	12
通讯波特率 Baud rate(Mbps)	5	控制频率 Control frequency(Hz)	3k

电机特性参数

Motor parameters

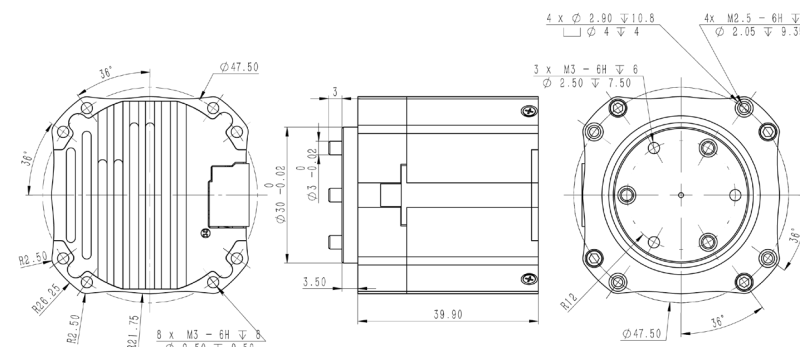
扭矩常数 Torque constant(Nm/A)	0.039	极对数 Polar logarithm(mm)	14
-------------------------------	-------	----------------------------	----

模组性能参数(24v)

Module performance parameters

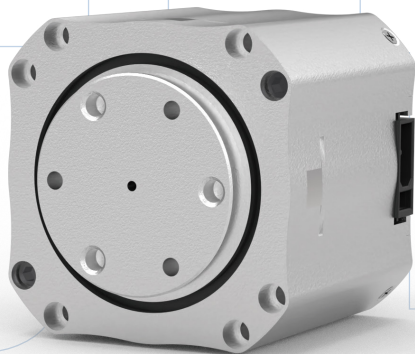
减速比 Reduction ratio	8	额定扭矩 Rated torque(Nm)	0.5
峰值扭矩 Peak torque(Nm)	1.5	堵转扭矩 Blocking torque(Nm)	2.5
额定转速 Rated RPM(RPM)	160	空载转速 Polar logarithm(mm)	300
额定功率 Rating(W)	13		

产品安装尺寸图纸 Product Installation Dimension Drawing



HTDW-6056-36-NE

行星关节模组



产品参数 Product Parameters

基本参数 Basic parameters

长宽 length and width (mm)	60
高度 high degree (mm)	54.5
重量 weights (g)	572

减速机特性参数 Reducer Characteristics

齿隙 Backlash(Arcmin)	<10
重复定位精度 Repeat Positioning Accuracy(Arcmin)	<12
绝对定位精度 Absolute positioning accuracy(Arcmin)	<15

模组性能性能参数

Module performance performance parameters

额定电压 Rated voltage(V)	12-48	额定电流 Rated current(A)	2
峰值电流 Peak current(A)	10	扭矩控制精度 control accuracy(Nm/A)	±15%
转速控制精度 Speed control accuracy(Nm/A)	±15%	响应时间 Response time(us)	≤200
高速端编码器分辨率 High-speed encoder resolution(bit)	14	低速端编码器分辨率 Low-speed encoder resolution(bit)	12
通讯波特率 Baud rate(Mbps)	5	控制频率 Control frequency(Hz)	3k

电机特性参数

Motor parameters

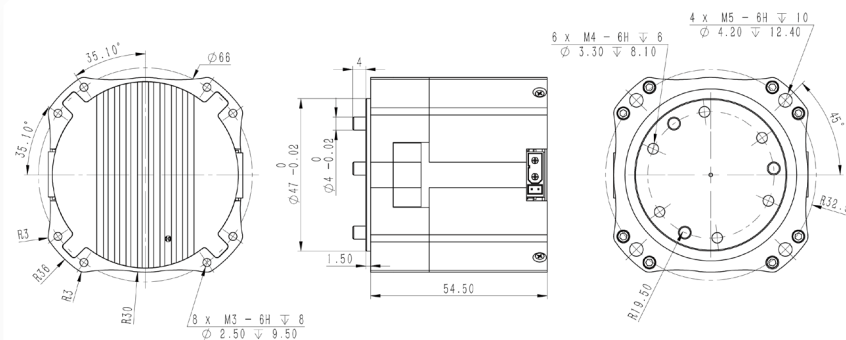
扭矩常数 Torque constant(Nm/A)	/	极对数 Polar logarithm(mm)	14
-------------------------------	---	----------------------------	----

模组性能性能参数(24v)

Module performance performance parameters

减速比 Reduction ratio	36	额定扭矩 Rated torque(Nm)	10
峰值扭矩 Peak torque(Nm)	36	堵转扭矩 Blocking torque(Nm)	40
额定转速 Rated RPM(RPM)	50	空载转速 Polar logarithm(mm)	60
额定功率 Rating(W)	42		

产品安装尺寸图纸 Product Installation Dimension Drawing



High Torque HTDW-3536-32-NE 行星关节模组



产品参数 Product Parameters

基本参数 Basic parameters

长宽 length and width (mm)	35
高度 high degree (mm)	36.1
重量 weights (g)	150

减速机特性参数 Reducer Characteristics

齿隙 Backlash(Arcmin)	<10
重复定位精度 Repeat Positioning Accuracy(Arcmin)	<12
绝对定位精度 Absolute positioning accuracy(Arcmin)	<15

模组性能性能参数

Module performance performance parameters

额定电压 Rated voltage(V)	12-48	额定电流 Rated current(A)	0.35
峰值电流 Peak current(A)	2.6	扭矩控制精度 control accuracy(Nm/A)	±15%
转速控制精度 Speed control accuracy(Nm/A)	±15%	响应时间 Response time(us)	≤200
高速端编码器分辨率 High-speed encoder resolution(bit)	14	低速端编码器分辨率 Low-speed encoder resolution(bit)	12
通讯波特率 Baud rate(Mbps)	5	控制频率 Control frequency(Hz)	3k

电机特性参数

Motor parameters

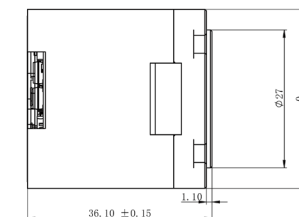
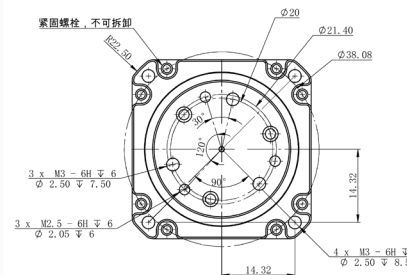
扭矩常数 Torque constant(Nm/A)	0.045	极对数 Polar logarithm(mm)	7
-------------------------------	-------	----------------------------	---

产品安装尺寸图纸 Product Installation Dimension Drawing

模组性能性能参数(24v)

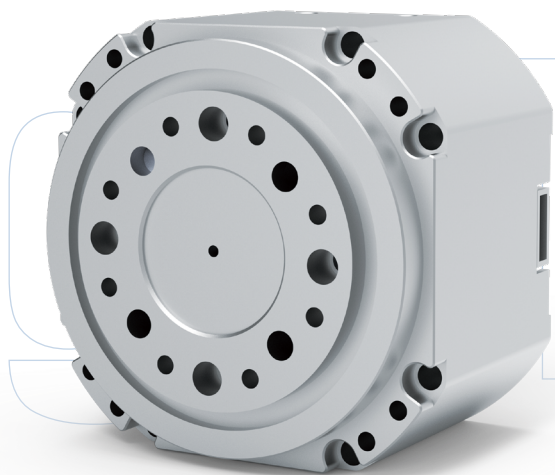
Module performance performance parameters

减速比 Reduction ratio	32	额定扭矩 Rated torque(Nm)	0.6
峰值扭矩 Peak torque(Nm)	2	堵转扭矩 Blocking torque(Nm)	2.5
额定转速 Rated RPM(RPM)	60	空载转速 Polar logarithm(mm)	110
额定功率 Rating(W)	12		



HTDW-7256-30-NE

行星关节模组



产品参数 Product Parameters

基本参数 Basic parameters

长宽 length and width (mm)	75
高度 high degree (mm)	56
重量 weights (g)	850

减速机特性参数 Reducer Characteristics

齿隙 Backlash(Arcmin)	<10
重复定位精度 Repeat Positioning Accuracy(Arcmin)	<12
绝对定位精度 Absolute positioning accuracy(Arcmin)	<15

模组性能参数

Module performance parameters

额定电压 Rated voltage(V)	12-48	额定电流 Rated current(A)	8
峰值电流 Peak current(A)	45	扭矩控制精度 control accuracy(Nm/A)	±15%
转速控制精度 Speed control accuracy(Nm/A)	±15%	响应时间 Response time(us)	≤200
高速端编码器分辨率 High-speed encoder resolution(bit)	14	低速端编码器分辨率 Low-speed encoder resolution(bit)	12
通讯波特率 Baud rate(Mbps)	5	控制频率 Control frequency(Hz)	3k

电机特性参数

Motor parameters

扭矩常数 Torque constant(Nm/A)	0.562	极对数 Polar logarithm(mm)	14
-------------------------------	-------	----------------------------	----

模组性能参数(24v)

Module performance parameters

减速比 Reduction ratio	30	额定扭矩 Rated torque(Nm)	18
峰值扭矩 Peak torque(Nm)	50	堵转扭矩 Blocking torque(Nm)	60
额定转速 Rated RPM(RPM)	50	空载转速 Polar logarithm(mm)	60
额定功率 Rating(W)	60		

产品安装尺寸图纸 Product Installation Dimension Drawing

